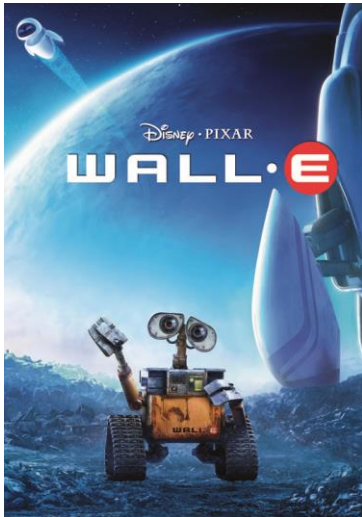


Movie Kit



WALL-E



Year of Release: 2008

Rating: G

Length: 1h 38min

English level: Easy-Medium

Director: Andrew Stanton

Starring: Ben Burtt, Elissa Knight, Jeff Garlin

Themes: Environmental Conservation, STEM

Context

This movie takes place about 700 years into the future, and humans have been forced to abandon Earth after allowing pollution and environmental degradation to ruin the planet. The people who were able to survive are now living in a huge spaceship. Meanwhile, alone back on Earth is WALL-E, a garbage-collecting robot who spends his days cleaning up the mess the humans left behind. Finding long forgotten treasures in the endless trash gives him occasional relief. One day he discovers a little green plant that has somehow managed to sprout despite all the toxicity. This living plant provides the key to restoring Earth and the devastated environment.

Important Vocabulary/Places/Characters

- **WALL-E** – acronym for Waste Allocation Load Lifter: Earth-Class. WALL-E is the main character and the last robot left on earth.
- **EVE** – acronym for Extraterrestrial Vegetation Evaluator. EVE’s job is to look for vegetation, or plant life, on Earth as part of a mission to see if life can be sustainable on the planet again. EVE plays a key role in the movie by taking the little green plant that WALL-E found, which sets off a series of events leading to the eventual recolonization of Earth.
- **Buy-N-Large** – the megacorporation that evacuates all the humans from Earth to a giant mother spaceship, called the *Axiom*.
- **Axiom** – the name of the main spaceship where most humans now live. On the *Axiom*, the humans are obese and largely unable to move on their own. Instead they move around on hover chairs, and eat liquid foods.

Discussion Questions

- 1) Describe the circumstances on Earth in the movie. Why is the planet abandoned?
- 2) Do you think in the future, the Earth will be similar to how it is shown in the movie? Why or why not?
- 3) What was WALL-E designed to do? Can you explain some of WALL-E’s recreational activities?
- 4) What is EVE’s function? What does EVE do when WALL-E shows her the plant?

- 5) How are humans represented in the movie? Do the characteristics that you mention apply to our current attitudes toward Earth?
- 6) What is the interaction between humans and technology in this movie? Is it a healthy interaction – why or why not?
- 7) What do the humans do when they return to Earth? Do you believe the humans will be successful in their recolonization of Earth?
- 8) Could this movie be a look into the future? What human activities might be contributing to the Earth as shown in the movie?
- 9) What is sustainability? Are we creating a culture of sustainability in our communities? If not, why aren't we?